

MNA provides analytical, innovation and decision services to both government and commercial organizations to help leaders, managers, and staffs tackle their greatest problems, and to identify and exploit opportunities. Headquartered in Overland Park, KS, MNA is a Service-Disabled Veteran-Owned Small Business (SDVOSB) with offices in Kansas and North Carolina.

Our Capabilities

Management Consulting

- Business Analysis
- Capabilities and Resource Analysis
- Change Management
- Content Management and Taxonomy Development
- Expertise and Knowledge Capture
- Knowledge Management Strategy
- Operational Planning
- Organizational Assessment
- Process Analysis and Improvement
- Strategic Communications and Planning
- Systems Analysis
- Value Stream Mapping and Analysis

Advanced Modeling

- Economic Forecast Modeling
- Process Modeling and “What if” Analysis
- Systems Mapping Analysis and Modeling
- Value Stream Modeling © (VSMoD©)

Training and Facilitation Services

- Interagency Working Groups and Seminars
- Kaizen Events
- Mission Planning and Rehearsal Exercises
- Retrospectives and After Action Reviews
- Scenario-driven Table-top Exercises
- Training and Curriculum Development

Certified and Cleared Workforce

- 100% hold Secret clearances
- Certification areas include: Lean Six Sigma, Knowledge Management, Change Management, Content Management, Business Intelligence, Systems Practice

Contract Vehicles

- GSA Professional Services Schedule
- VECTOR: Veterans Enterprise Contracting for Transformation and Operational Readiness

NAICS Codes

- 541330 – Engineering Services
- 541511 – Custom Computer Programming
- 541611 – Administrative Management and General Management Consulting Services
- 541614 – Process, Physical distribution and Logistics Consulting Services
- 541618 – Other Management Consulting Services
- 541690 – Other Scientific and Technical Consulting Services
- 541715 – Research and Development Svc in Physical, Engineering and Life Sciences
- 541720 – Research and Development in the Social Sciences
- 611430 – Professional and Management Development Training
- 611710 – Educational Support Services



Our Team



Rodler “Rick” Morris, PhD.
President
rick.morris@mnallc.com



John Nelson
Chief Executive Officer
john.nelson@mnallc.com

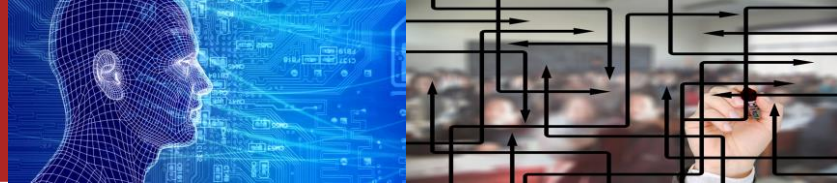


Stephen “Dave” Nichols
Chief Strategic Programs
dave.nichols@mnallc.com



Maria Minchew
Chief Operating Officer
maria.minchew@mnallc.com

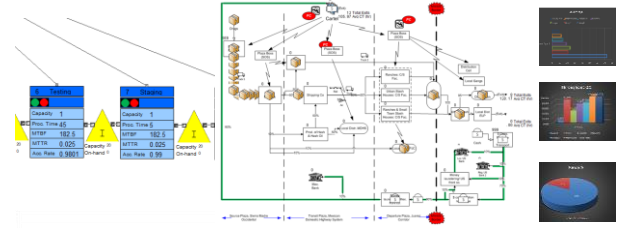
Advanced Modeling



MNA develops models and simulations to help clients make informed decisions to improve economic, organizational and operational performance.

Process Modeling and Value Stream Modeling® (VSMoD®)

High-fidelity simulations of organizational processes and value streams. Affords detailed assessment of resource utilization, process routing, control mechanisms, efficiency, and analysis of alternatives.

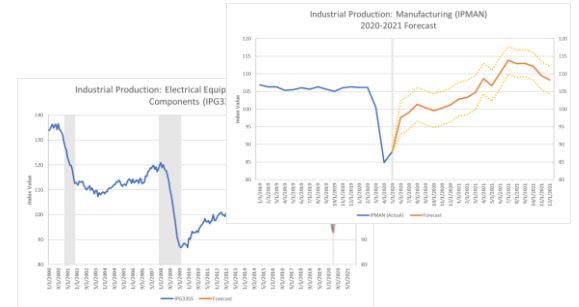


Systems Mapping, Analysis and Modeling

Detailed analysis of interconnected organizational systems using both qualitative and quantitative approaches. Combines multiple perspectives to provide a comprehensive understanding of the interplay between actors in a system and with the environment.

Economic Modeling and Forecasting

Analytical models underpinning an intelligence analysis system that forecasts key growth metrics. Enables strategic decision-making for staffing, asset demand/utilization, procurement, sales, marketing, and communications. Teamed with Armada Corporate Intelligence.



Our Valued Clients



ARMADA



Sample Client Engagements

• Armada Strategic Intelligence System (ASIS)

MNA is teamed with Armada Corporate Research building predictive economic models of key industry metrics to enable businesses to anticipate and react to market changes.

• Freedom's Path USA (formerly Freedom Now USA) Counter Human Trafficking Coalition

We applied systems thinking and systems practice to build a composite picture and dynamic systems maps of human trafficking and counter-human trafficking networks in Topeka/Shawnee County, KS.

• National Watermelon Promotion Board

Developed an econometric model and simulation to assess the impact of the promotional activities of the National Watermelon Promotion Board on the retail and farm price of watermelon as well as their broader economy-wide impacts.

• U.S. Army Materiel Systems Analysis Activity/U.S. Army Research Laboratory

Developed a critical information and situational awareness model and a dynamic systems task effectiveness assessment model.

• U.S. Customs and Border Protection (CBP), Office of Field Operations (OFO)

Developed an operations process model of the cargo Port of Entry Ysleta to determine optimum use of resources.



John Nelson

P: 913.210.4216

e: john.nelson@mnallc.com



Mastering Complexity